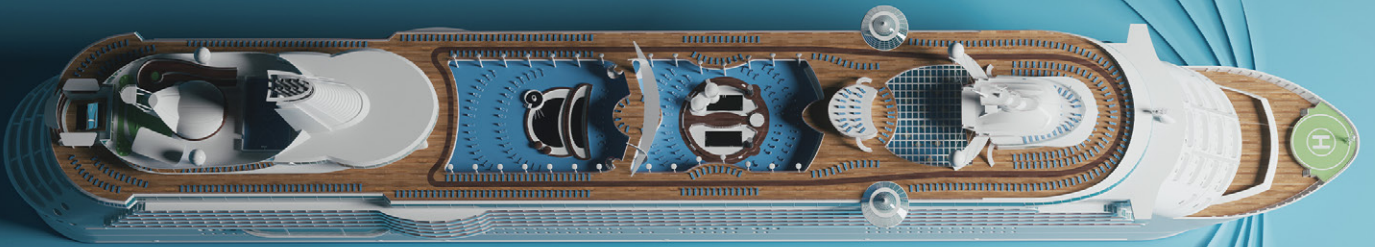


THE WORLD'S LARGEST *Cruise Port* OPERATOR



GLOBAL PORTS
HOLDING

globalportsholding.com

 @globalportsholdingplc

 @globalportsholding

 @globalportsholding

 @global_ports

 @globalportsholding

[globalportsholding.com](https://www.globalportsholding.com)



**GLOBAL PORTS
HOLDING**

THE WORLD'S LARGEST CRUISE PORT OPERATOR

Global Ports Holding Plc is the world's largest cruise port operator with an established presence in the Caribbean, Mediterranean, Asia-Pacific regions.

Global Ports Holding (GPH) was established in 2004 as an international port operator with a diversified portfolio of cruise and commercial ports. As an independent cruise port operator, the group holds a unique position in the cruise port landscape, positioning itself as the world's leading cruise port brand. GPH operates 30 cruise ports in 17 countries and continues to grow steadily. GPH provides services for over 20 million passengers annually.

A portfolio of award-winning ports and terminals allows GPH to transfer best practices to its subsidiaries. With a strong focus on operational excellence, enhanced security practices and customer-oriented services, GPH aims to contribute to the development of the cruise industry.



GLOBAL PORTS
HOLDING

WEST MED & ATLANTIC

*Alicante • Barcelona • Fuerteventura • Lanzarote
Las Palmas • Lisbon • Malaga • Tarragona
Valencia • Vigo*

NORTH EUROPE

Bremerhaven • Kalundborg

EAST MED

Bar • Bodrum • Kusadasi • Zadar

ASIA

Ha Long • Singapore

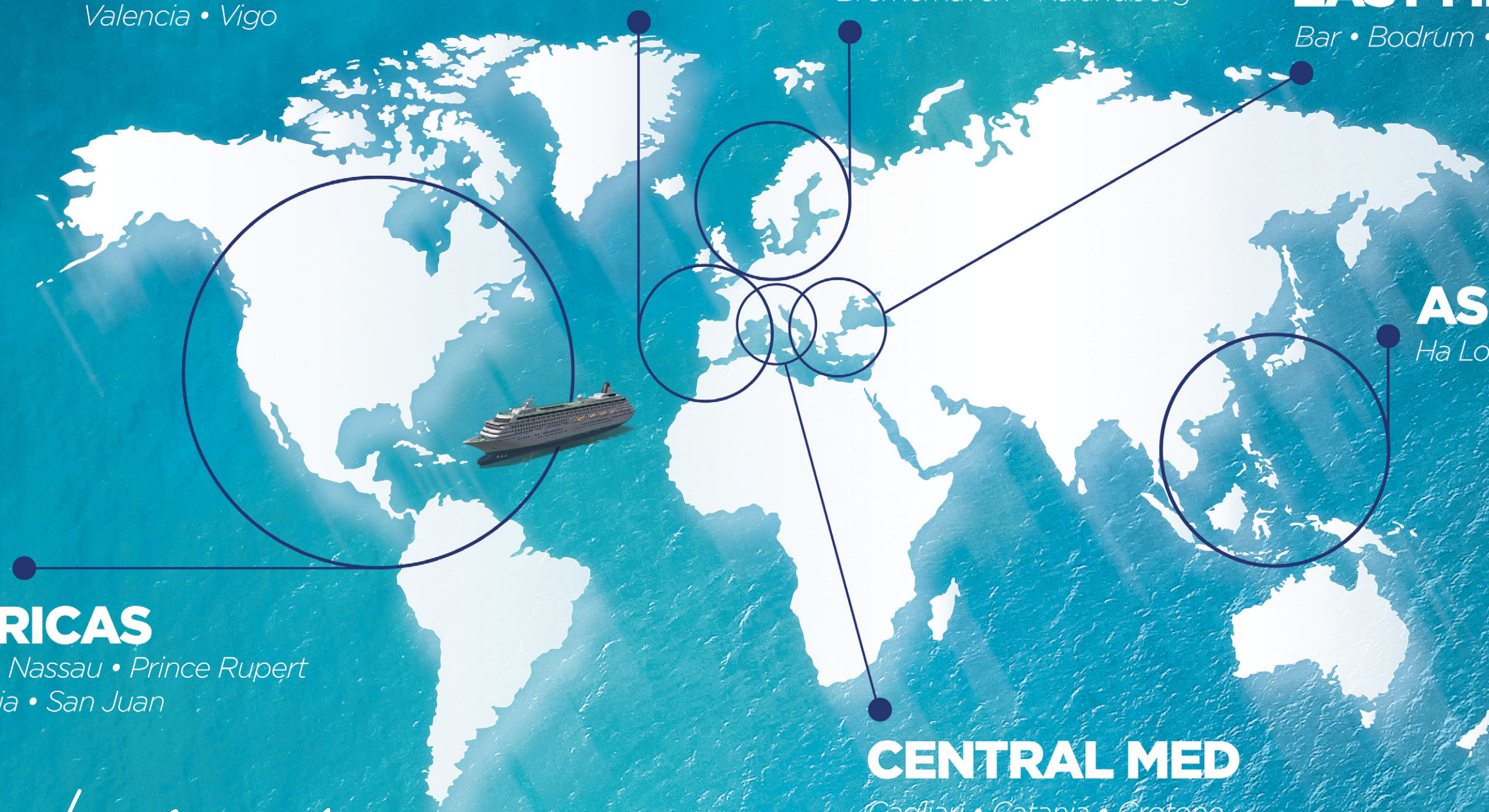
AMERICAS

*Antigua • Nassau • Prince Rupert
Saint Lucia • San Juan*

CENTRAL MED

*Cagliari • Catania • Crotona
La Goulette • Taranto • Valletta • Venice*

Global Map





PRINCE RUPERT
CANADA



AMERICAS

The Americas, including the dynamic Caribbean, stands as a pivotal hub for the cruise industry. Global Ports Holding has strategically broadened its presence in this region, achieving notable milestones.

In Antigua, GPH has successfully added a fifth berth to the cruise port, boosting its capacity and overall allure. The redevelopment project in Nassau Cruise Port has revolutionized the cruise experience, showcasing our dedication to advancing tourism and cruising. Prince Rupert, GPH's first port in Alaska region of Canada, is focused on enhancing and expanding shore excursion offerings. The recent commencement of operations in San Juan Cruise Port represents a significant milestone for the company.

Looking forward, Global Ports Holding is committed to innovation, development, and expansion, exemplified by our forthcoming venture in Saint Lucia, poised to set new benchmarks in the cruise industry.

CANADA

UNITED STATES

NORTH PACIFIC OCEAN

GULF OF MEXICO

MEXICO

SAN JUAN
PUERTO RICO

NASSAU
THE BAHAMAS

CARIBBEAN SEA

ANTIGUA
ANTIGUA & BARBUDA
SAINT LUCIA
ST. LUCIA

NORTH ATLANTIC OCEAN

SOUTH PACIFIC OCEAN



ANTIGUA

ANTIGUA & BARBUDA

The Heart of the Caribbean

The highlight of the Southern Caribbean itineraries, Antigua & Barbuda is the gateway from the Atlantic Ocean to the Caribbean Sea. The capital city of Antigua, St John's, is a melting pot of residents and tourists meandering past the varied architectural styles of the city. Unique attractions, restaurants and shops can be found throughout the destination, housed in brightly coloured 19th century buildings.

Welcoming over 791,000 passengers aboard 410 calls in 2019, Antigua Cruise Port is one of the most preferred cruise destinations in Southern Caribbean. Serving mainly as a transit port, the facility is currently undergoing an \$80m redevelopment which will be completed while operations continue. As a part of this effort, the port recently built a new 700-foot berth, expanding its capacity from handling four to five mega cruise vessels at the same time in addition to tender services at Falmouth and Barbuda.

Upon completion of the project, Antigua Cruise Port will launch the Antigua Cruise Port Day Club – an ultramodern waterfront playground that will include several pools, retail spaces for local entrepreneurs, local food and beverage outlets. These offerings will support the enhancements being made at the existing Heritage Quay Shopping Centre, making Antigua an even more inviting destination. More F&B, enhanced security and parking services, and a new terminal that is optimized for passenger flow will round out the exciting changes to come.

In addition to the redevelopment work that is underway, the port is being repositioned to provide homeport services, giving cruise lines and passengers more options to extend their stay and experience the destination in their own way.

NASSAU

THE BAHAMAS

A transformational Project for Nassau

Nassau, Bahamas, is one of the most popular cruise destinations in the world, attracting 3.7 million passengers per year with its tremendous natural beauty and rich culture. Only 50 miles southeast of the coast of Florida, this world famous destination is served by three of the largest and busiest cruise ports in the world - PortMiami, Port Everglades, and Port Canaveral.

Nassau Cruise Port (NCP), Nassau's international cruise gateway, is being transformed into one of the great waterfronts of the world through a \$300 million redevelopment project. This extensive undertaking includes the repair and expansion of Prince George Wharf and the addition of a sixth berth that gives the port the capacity to accommodate three Oasis and Icon-Class vessels simultaneously.

This exciting transformation will also include the construction of a new terminal building, an immersive Junkanoo museum experience, event & entertainment spaces, a 3000-person capacity amphitheater, an art gallery, and authentic

Bahamian retail and food and beverage offerings. Through a well-planned, customer-centric design, passengers will flow easily into downtown Nassau to experience the vibrant flavour of this 300-year-old city.

The revitalized port will become a beloved cultural and entertainment destination that will celebrate the heritage and history of Nassau, which was designated a UNESCO Creative City of Crafts and Folk Arts in 2014. By showcasing the best of the country's "Authentically Bahamian" culture, the port will offer a one-of-a-kind experience for all visitors. NCP will also incorporate environmental sustainability into key areas of the project and will promote and support environmental protection in partnership with local and international stakeholders.

It is anticipated that this brand-new waterfront will serve as a catalyst for the wider development of downtown Nassau. The construction phase began in Q4 2019 and Nassau Cruise Port held its grand opening in May 2023.



Maximum Ship Limitation for Berthing

Length : No Limit
Width : No Restrictions
Draught: 7 m - 9.3 m



Quays / Berths

Total Number of Berths : 5
Total Berthing Line Length: 1,720 m
Quays Depth : 10.3 m
Terminal : 1



Distances/Transportation

City Center: 5 m
Airport : 25 km



Maximum Ship Limitation for Berthing

Length : No Limit
Width : No Limit
Draught: 9.3 m



Quays / Berths

Total Number of Berths : 6
Total Berthing Line Length: 2,230 m
Quays Depth : 8.9 m - 12.5 m
Terminal : 1



Distances/Transportation

City Center: 500 m
Airport : 22 km



Must See

- Barbuda
- Boggy Peak
- English Harbour (Nelson's Dockyard)
- Shirley Heights
- St. John's Cathedral
- Devil's Bridge
- Dockyard museum



Must See

- Paradise Island
- The Queen's Staircase
- Fort Charlotte
- Fort Fincastle
- Ardastra Gardens, Zoo & Conservation Centre
- National Art Gallery
- The Fish Fry
- Clifton Heritage National Park



princerupertcruiseport.com 🔍



saintluciacruzseport.com 🔍

PRINCE RUPERT CANADA

Preserving the Spirit of Nature

Nestled in the splendor of British Columbia's Great Bear Rainforest, the Prince Rupert Cruise Port, just 40 miles from Alaska, serves as a key hub in one of the world's largest cruise markets. Positioned for seamless itineraries to and from Seattle and Vancouver, it unlocks extraordinary experiences.

In 2023, the port warmly welcomed 80,923 cruise passengers and is poised for continued growth. Collaborating closely with local stakeholders, Prince Rupert Cruise Port curates immersive programs highlighting the region's rich heritage, culture, gastronomy, and the unique biodiversity of the Great Bear Rainforest, making it a must-visit for enriching experiences.

With a dedicated cruise pier accommodating ships up to 335 meters, the port's robust infrastructure handles large vessels and substantial passenger volumes. As a non-U.S. port, it offers a valuable opportunity for cruise lines from Seattle. Collaborating with GPH, upcoming investments will expand berthing capabilities, enhancing the capacity for sizable cruise ships. Prince Rupert Cruise Port, with its strategic location and commitment to excellence, stands as a premier destination for Pacific Northwest cruise travelers.

SAINT LUCIA ST. LUCIA

Investing in People

UPCOMING PROJECT

Long considered one of the top travel destinations in the Caribbean, 'Simply Beautiful' Saint Lucia is one of the most popular places on the planet for many reasons. The 27-mile long island nation - home to volcanic beaches, luxury resorts, incredible cuisine, and quaint fishing villages - has a bit of everything you could hope to find on a perfect tropical getaway.

Through a 30-year partnership focused on cruise-related development and operations, GPH will collaborate with local industry stakeholders to design and build new port infrastructure, enhance the existing port facilities, and create more opportunities for Saint Lucians through cruise sector and destination development.

The Saint Lucia Cruise Port Project will include substantial investment in key areas including upgrading Berth 1 at Pointe Seraphine to create space

for Oasis-class vessels; enhancing the Vendors Arcade, La Place Carenage, the Customs building, and the Northern Wharf at Port Castries; developing the site at Bannanes Bay to create a new Fisherman's Village to maximize space for local vendors and construct an accompanying bus station for tours; and significant development of the waterfront at Soufriere to create an exciting and attractive guest experience. In addition to these significant infrastructural and experiential enhancements,

In 2019, Saint Lucia welcomed 790,0000 passengers. The completion of the extended pier and upgrade of the facilities are expected to lead to an increase in passenger volumes to over one million guests per year. GPH has signed a 30-year concession agreement, with a potential 10-year extension option, with the Government of Saint Lucia for the cruise related operations in Saint Lucia.



Maximum Ship Limitation for Berthing

Length : 335 m
Width : No Limit
Draught: 11.5 m



Quays / Berths

Total Number of Berths : 1
Total Berthing Line Length: 325 m
Quays Depth : 21 m
Terminal : 1



Distances/Transportation

City Center: 2 m
Airport : 9.9 km



Maximum Ship Limitation for Berthing

Length : 348 m
Width : No Restrictions
Draught: 10 m



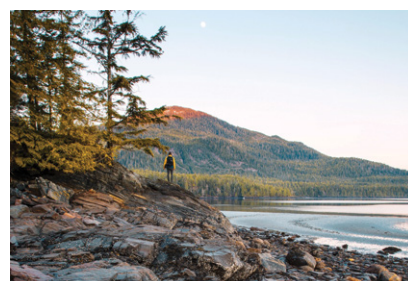
Quays / Berths

Total Number of Berths : 3
Total Berthing Line Length: 950 m
Quays Depth : 11 m
Terminal : 1



Distances/Transportation

City Center : 30 m
Airport : 50 km



Must See

- Nostalgic Trolley
- Museum of Northern BC
- Butze Rapids Park & Trail
- Khutzeymateen Grizzly Bear Sanctuary



Must See

- The Pitons
- Sulphur Springs
- Marigot Bay
- Pigeon Island National Park
- Anse Chastenet Marine National Park
- Diamond Falls Botanical Gardens
- Rodney Bay
- Castries Market



SAN JUAN

PUERTO RICO

Cruising Together into the Future

Global Ports Holding, through a dynamic public-private partnership with the Puerto Rico Ports Authority, will elevate the iconic San Juan Cruise Port to world-class standards through an extensive \$425 million redevelopment project.

San Juan Cruise Port will enhance and expand the facility into one of the largest and best cruise ports in the world as a part of a 30-year private-partnership agreement with the Puerto Rico Ports Authority. The San Juan Cruise Port team will employ best-in-class practices and global expertise to achieve extensive benefits for all stakeholders.

In the long-term, San Juan Cruise Port will focus on the development of two distinct cruise port areas: the Old San Juan District including piers 1 and 4 (mainly dedicated to transit calls and luxury ships) and the Homeport District including Piers 11-14 and the Pan American piers.

With a focus on excellence and innovation, San Juan Cruise Port project will set the standard for the next generation of cruising. From the state-of-the-art facilities to the personalized services, every aspect of the port has been designed to exceed the expectations of passengers and cruise lines alike.



Maximum Ship Limitation for Berthing

Length : No Limit
Width : No Limit
Draught: 8 m - 11 m



Quays / Berths

Total Number of Berths : 6
Total Berthing Line Length: 1,870 m
Quays Depth : 8 m - 11 m
Terminal : 3



Distances/Transportation

City Center : 0.5 km
Airport : 12 km
Shuttle Services: Yes



Must See

Old San Juan
Fort El Morro
Castillo San Cristobal
La Fortaleza
Museo de Arte de Puerto Rico



Prince Rupert, a coastal city in British Columbia, Canada, boasts a diverse array of wildlife due to its proximity to the Pacific Ocean and lush surroundings. The region is home to a variety of marine life, including whales, seals, and sea lions, making it a prime destination for wildlife enthusiasts.

Additionally, the surrounding forests offer opportunities for visitors to partake in wildlife sightseeing, providing a chance to observe these animals in their natural habitats and enhancing the city's allure for nature lovers.



WEST MED & ATLANTIC

The West Med & Atlantic region, situated as one of the key corners of the Mediterranean, has some of the most diverse ports. From all year-round cruises to expedition market, this region has some of the most sustainable ports in the world.

GPH operates 11 cruise ports in this region including Barcelona, one of the busiest cruise ports in the world. GPH has initiated several transformative projects that highlight the commitment to sustainability and self-sufficiency. Notably, there are ongoing eco-friendly projects fostering ambitious developments in key ports like Alicante, Las Palmas, and Tarragona. These initiatives reflect Global Ports Holding's forward-thinking approach, aiming to establish these ports as beacons of green innovation, while bolstering the economic and environmental resilience of the entire region.





GLOBAL PORTS
HOLDING

WEST MED & ATLANTIC

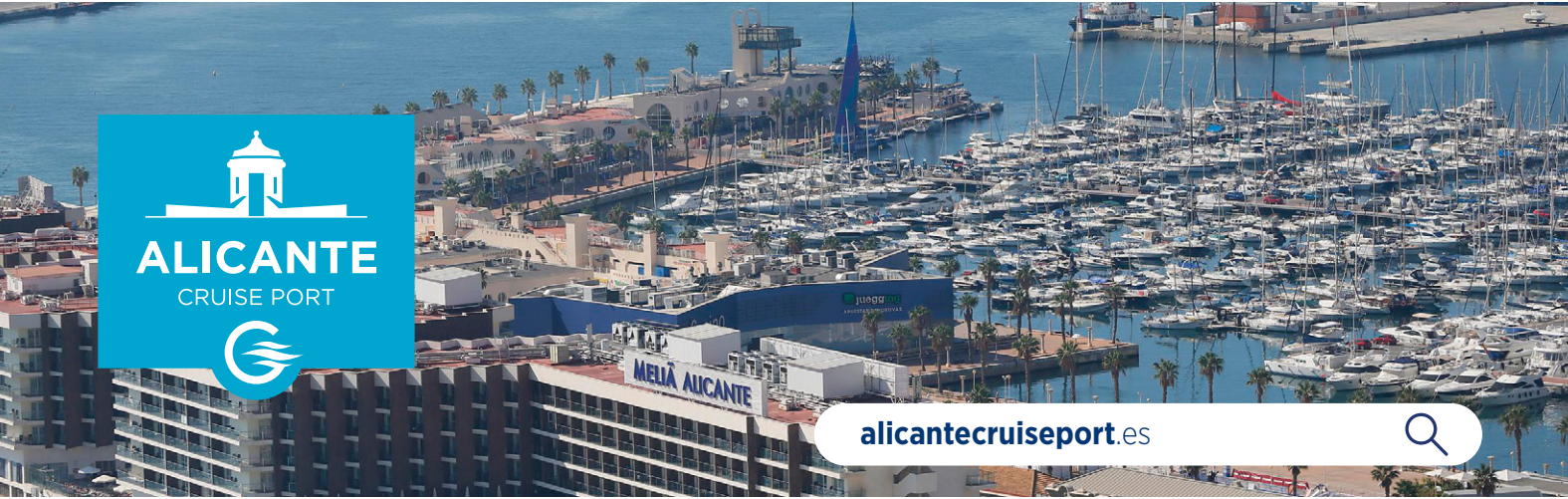
ALICANTE



GLOBAL PORTS
HOLDING

WEST MED & ATLANTIC

BARCELONA



alicantecruiseport.es



bcncruiseport.com



ALICANTE SPAIN

Discover the Delights of Costa Blanca

Alicante is a town located in the Southeast of Spain and a gateway to Costa Blanca. The city is known for its historical sites, incredible beaches, and beautiful harbor. With over 200k visitors yearly, it is one of Spain's most popular and rapidly growing cruise destinations.

The port can accommodate up to two large cruise ships, in its 900 m total berthing line. With its terminal the cruise port can easily handle homeporting or interporting operations. Due to its proximity to the city centre—just 1 km—the cruise port makes city attractions easily accessible to passengers.

Alicante Cruise Port has gone through a multimillion-euro investment by the Port Authority that has significantly enhanced the port and surrounding area and integrate it into the fabric of the wider waterfront and city. As part of the concession agreement, GPH plans to invest up to Euro 2m into refurbishing and modernizing the cruise terminal.

Alicante is one of the most popular tourist destinations on the east coast of Spain and is situated in the center of the Costa Blanca. Part of the appeal of this lovely harbor city, located at the foot of the Castle of Santa Barbara, a silent witness to the numerous civilizations that have settled here, is its rich culture and the tranquil waters of the Mediterranean Sea.

BARCELONA SPAIN

Europe's Leading Cruise Port

Barcelona is one of Europe's leading tourist destinations for local and international visitors with around 30 million visitors yearly. The port is ideally positioned to service cruise traffic destined for the city of Barcelona itself and the region of Catalonia, both of which offer many historic, natural, and cultural attractions for tourists.

Barcelona Cruise Port operates four public cruise terminals at the Port of Barcelona: Terminal A, B, C at Adossat pier; and Terminal South at the World Trade Center, which is located in the city center. The Port has accumulated comprehensive knowledge of the industry and increased cruise passenger traffic to become the largest cruise port in Europe and the 4th largest in the world. The port's facilities have been improved to accommodate the largest ships in the world, such as the Genesis Class (Oasis, Allure and Harmony of

the Seas). Modern passenger boarding bridges are installed in all terminals to properly service cruise lines.

Barcelona Cruise Port is a leader in port security and specific logistics for cruise traffic. The port follows strict guidelines for safety and security, and it implements the ISPS Code as well as EU regulations. Barcelona Cruise Port has recently been recognized with the following awards: "Best Turnaround Port Operations", "Most Efficient Operator", "Most Improved Port Facilities" and "Most Responsive Port". Recently they have also started to provide ground handling services. The past two years they have successfully been helping Virgin Voyages complete their turnaround operations on their homeport in Terminal South. Barcelona Cruise Port keeps maintaining its status as a top cruise terminal while boasting a dossier of quality services.



Maximum Ship Limitation for Berthing

Length : Unlimited
Width : Unlimited
Draught: Unlimited



Quays / Berths

Total Number of Berths : 3
Total Berthing Line Length: 900 m
Quays Depth : 8.5 m - 13.5 m
Terminal : 1



Distances/Transportation

City Center : 1.5 km
Airport : 12 km
Shuttle service to: Yes



Maximum Ship Limitation for Berthing

Length : No Limit
Width : No Limit
Draught: Up to 8 m (WTC Pier) Up to 12 m (Adossat Pier)



Quays / Berths

Total Number of Berths : 6
Total Berthing Line Length: 2,350 m
Quays Depth : 8 m - 12 m
Terminal : 5



Distances/Transportation

City Center : 2.5 km
Airport : 12 km High-Speed
Shuttle service : Yes



Must See

Castle of Santa Barbara
Explanada de España
Casco Antiguo
MARQ (Museo Arqueologica de Alicante)
Basilica de Santa María



Must See

Modernisme-architecture
Gothic Quarter
Sagrada Família
La Rambla
National Art Museum of Catalunya
Joan Miro Foundation, Olympic Ring



GLOBAL PORTS
HOLDING

WEST MED & ATLANTIC

FUERTEVENTURA



GLOBAL PORTS
HOLDING

WEST MED & ATLANTIC

LANZAROTE



fuerteventuracruiseport.com



lanzarotecruiseport.com



FUERTEVENTURA SPAIN

Sailing with the Breeze

Originally known as Puerto de las Cabras (translated as "Port of the Goats"), Fuerteventura was established as a fishing settlement with a natural harbor. Fuerteventura is one of the main cruise ports in the Canary region serving all the cruise lines.

Fuerteventura Cruise Port has one dedicated berth to cruise lines with a berthing length of 304m. It can host 1 large ship or 2 small ships simultaneously. The port is surrounded by the town center, which means most of the city's tourist areas and attractions are located within easy walking distance from the cruise terminal.

With its 3,000 hours of sunshine a year, Fuerteventura is the perfect place to enjoy the rays and top up a tan especially when taking into account its excellent beaches.

Global Ports Holding has been chosen as the preferred partner for the 20-year management of Fuerteventura Cruise Port in 2022.

LANZAROTE SPAIN

Cruise to Another Planet

Lanzarote, the fourth largest island of the Canary Islands off the coast of West Africa administered by Spain, is known for its year-round warm weather, beaches and volcanic landscape. Serving this beautiful island as a gateway is Lanzarote Cruise Port.

Right in the heart of the city, Lanzarote Cruise Port can host 2 ships simultaneously. Passengers can hop off the cruise ship and choose to take a scenic route of Paseo de Puerto de Naos to access the city.

Lanzarote is very popular for winter cruising vacations due to the archipelago's mild climate in comparison to other European regions. With the addition of great international flight connections, Lanzarote is a preferred city for cruises.

Global Ports Holding has been chosen as the preferred partner for the 20-year management of Lanzarote Cruise Port in 2022.



Maximum Ship Limitation for Berthing

Length : 390 m
Width : No Limit
Draught: 9 m



Quays / Berths

Total Number of Berth : 1
Total Berthing Line Length: 304 m
Quays Depth : 9 m
Terminal : 1



Distances/Transportation

City Center : 500 m
Airport : 10 km
Shuttle Service: No



Maximum Ship Limitation for Berthing

Length : 345 m - 640 m
Width : No Limit
Draught: 11 m



Quays / Berths

Total Number of Berths : 2
Total Berthing Line Length: 350 m - 640 m
Quays Depth : 11 m



Distances/Transportation

City Center: 1.2 km
Airport : 9.4 km



Must See

Parque Natural de Corralejo
Oasis Wildlife Fuerteventura
Jandia Beach
Piscinas Naturales Aguas Verdes
Playa de Cofete



Must See

Timanfaya National Park
Los Jameos del Agua
LagOmar Museum
Jardin de Cactus
Playa de las Cucharas
San Jose Castle



laspalmascruiseport.com



lisboncruiseport.pt

LAS PALMAS SPAIN

Your Homeport For Year-Round Cruises

The Canaries are very popular for winter cruising vacations due to the archipelago's mild climate in comparison to other European regions. A major cruise port, Las Palmas is a year-round destination, located on the northeastern coast of Gran Canaria Island. It is the largest city of the island with great international flight connections. With its sandy beaches and beautiful turquoise waters, Las Palmas brings together culture scenery.

Global Ports Holding has been chosen as a preferred partner for the 40-year management of Las Palmas Cruise Port in 2022. GPH will be investing in the cruise port to build a new sustainable terminal that will transform the guest experience, as well create new opportunities to local stakeholders.

The port offers 4 berths with a total berthing line of 1,615m. With no limit to the maximum dimensions for berth, Las Palmas Cruise Port welcomes all ships of all sizes.

LISBON PORTUGAL

Welcome to Your New Home

Situated on the banks of the Tagus estuary near the historic and cultural city center. Lisbon Cruise Port is a port of call for cruise ships traveling between the Atlantic coast and Europe, the Western Mediterranean and Northern Europe, the Atlantic Islands and North Africa, as well as transatlantic journeys.

Lisbon Cruise Port operates an alongside berthing pier dedicated for cruise ships over a total of 1,490 m, allowing Lisbon to receive cruise ships of any sizes. The port currently operates two cruise terminals, the New Terminal & Santa Apolónia, both in walking distance to the city center.

The new terminal is a contemporary interpretation of the vibrant lifestyle of Lisbon, was designed by renowned Portuguese architect, João Luís Carrilho da Graça it's key consideration of design was sustainability and ensuring the smooth onward flow of tourists on their visit to the city. It covers around 13,800 m2 over three floors and houses the offices of the competent

authorities, tourist services, shops, check in facilities and catering services for the comfort of all visitors, passengers and crew.

The Lisbon Cruise Port has a privileged and central location in the context of the city allowing easy access to places of major tourist and of cultural interest as well as great accessibility to and from the Lisbon international airport served by more than 500 direct weekly flights to and from all over the world, and receiving more than 33.6 million passengers annually. Lisbon is the closest European capital to the United States and is just around a 2-hour flight from most of the other major European cities.

Both the city and its cruise port, have been internationally recognized and awarded, highlighting the excellence of the tourism product, as well as the successful collaboration and complementarity between the city, its port and all the entities involved.



Maximum Ship Limitation for Berthing

Length : No Limit
Width : No Limit
Draught: 11 m



Quays / Berths

Total Number of Berths : 4
Total Berthing Line Length: 1,615 m
Quays Depth : 11 m
Terminal : Under Delevopment



Distances/Transportation

City Center: 390 m
Airport : 27 km



Maximum Ship Limitation for Berthing

Length : No Limit
Width : No Limit
Draught: 10 m



Quays / Berths

Total Number of Berths : 4
Total Berthing Line Length: 1,425 m
Quays Depth : 7 m - 10 m
Terminal : 2



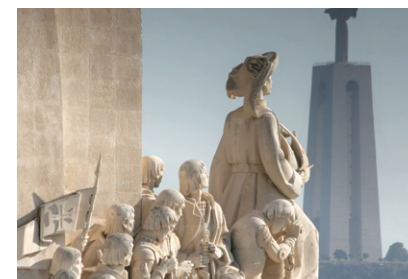
Distances/Transportation

City Center : 500 m
Airport : 10 km
Shuttle Service: Yes



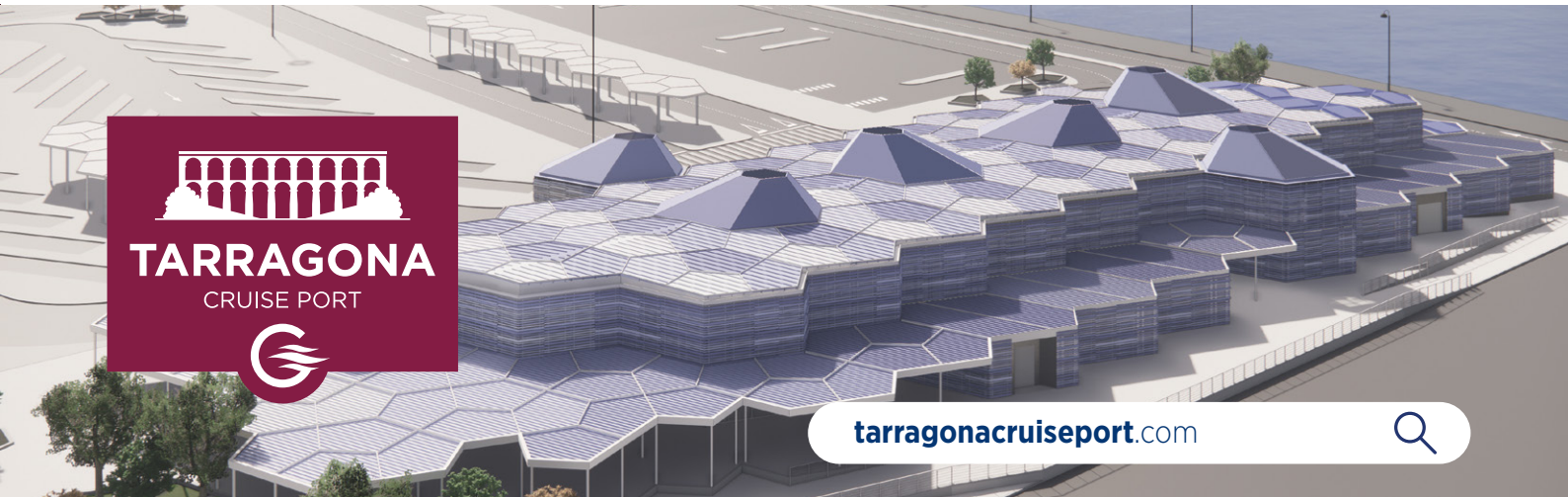
Must See

- Mercado de Vegueta
- Casa de Colon
- Catedral de Santa Ana
- Plaza Cairasco
- Playa de Las Canteras



Must See

- Belem Quarter
- Chiado Area & Down Town
- Alfama District / Old Lisbon
- Avenida da Liberdade
- Sintra - Pena Palace, Castle of the Moors



MALAGA SPAIN

The Gateway to Andalusia

Located in a strategic area in Southern Europe, connecting with routes to the Atlantic and the Mediterranean Malaga Cruise Port is the gateway to Andalusia. The port is just 15 minutes away from Malaga International Airport, which offers flights to and from Europe and all around the world. Malaga's port facilities, hotels and airport all make it a truly world-class international homeport.

Malaga Cruise Port manages and provides a comprehensive range of services within all three cruise terminals of the Port of Malaga: Terminal A, Terminal B and the Palm Grove Terminal and operates cruise dedicated piers over a total of 1,350 m, allowing Malaga to receive cruise ships of any sizes from all over the world. Larger cruise liners dock in the eastern area, at Terminal A and B, and smaller cruise ships dock at the inner basin next to the Palm Grove waterfront, which is within five minute's walking distance to the city center.

Malaga Cruise Port has invested heavily in port facilities to provide full turnaround and transit services. Recently the retail area has been completely refurbished and modernized into an amazing walking through experience to welcome and embrace the cruise passengers with local flavours of the destination. The city councils provides with a public shuttle service that connect the cruise terminal directly to the city center in 5 minutes. All three terminals have been designed with the latest requirements concerning safety and security in mind, and each fully complies with the International Ship and Port Facility Security Code (ISPS Code).

Malaga Cruise Port became subsidiary of Global Ports Holding in 2014.

TARRAGONA SPAIN

Discover a Journey in Time

Tarragona, located just 55 minutes away from Barcelona airport, is a captivating destination steeped in history. Acknowledged as a UNESCO World Heritage site, the city proudly stands on an ancient Roman site, once serving as the capital of Hispania and playing a crucial role in the Roman empire. Tarragona invites you on a journey through time, offering a unique glimpse into its rich historical legacy.

This UNESCO-recognized destination goes beyond its Roman roots, encompassing wonders such as the Poblet Monastery, the Ebro delta, and the awe-inspiring tradition of Human Towers. Additionally, a visit to Gaudi's hometown, Reus, adds a touch of modernism to the historical tapestry. For families seeking excitement, Tarragona boasts the renowned PortAventura World and Ferrari Land theme parks, promising a day filled with thrills and entertainment. Beyond the city's historical and modern attractions, the region offers a culinary delight, with its delicious

gastronomy complemented by renowned wines bearing five designations of origin. Tarragona Cruise Port serves as the gateway to this historical city, facilitating both transit and turnaround operations. A new terminal, set to be operational in May 2024, marks a significant investment by GPH, totalling €5.5 million. This state-of-the-art modular cruise terminal prioritizes sustainability, utilizing solar power to meet its energy needs.

Featuring four berths capable of accommodating the world's largest cruise ships, the Tarragona Cruise Port ensures a seamless and enjoyable experience for passengers. The new terminal not only enhances the overall passenger experience with retail and dining options but also improves the port's transport infrastructure with new coach and car parking facilities. In Tarragona, the convergence of history, culture, and modern amenities creates a destination that promises an unforgettable and enriching experience for all who visit.

Maximum Ship Limitation for Berthing
Length : No Limit
Width : No Limit
Draught: Max 17 m

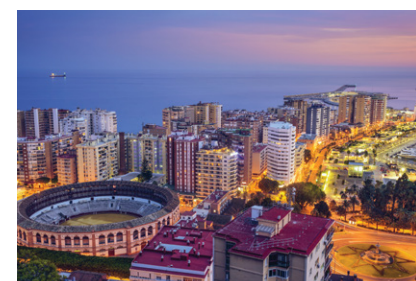
Quays / Berths
Total Number of Berths : 5
Total Berthing Line Length: 1,350 m
Quays Depth : 11 m - 17 m
Terminal : 3

Distances/Transportation
City Center: 500 m
Airport : 8 km

Maximum Ship Limitation for Berthing
Length : No Limit
Width : No Limit
Draught: 17 m - 19 m

Quays / Berths
Total Number of Berths : 4
Total Berthing Line Length: 1,435 m
Quays Depth : 17 m
Terminal : Under Development

Distances/Transportation
City Center : 5,8 km
Airport : 94 km (Barcelona)
18 km (Reus)
Shuttle Service : Yes



Must See

- Picasso Museum
- The Cathedral
- Gibralfro Castle & Alcazaba
- Roman Theatre
- Thyssen Museum
- Pompidou Museum
- Museo de Malaga



Must See

- Tarragona Roman legacy (UNESCO World Heritage)
- Poblet Monastery (UNESCO World Heritage)
- Modernism in Reus, Gaudi's hometown
- PortAventura World & Ferrari Land theme Parks
- Wine cellars from the region



valenciacruzport.com



vigocruiseport.com



VALENCIA SPAIN

Embark on a Silk Road Adventure

NEW PROJECT

The port city of Valencia lies on Spain's southeastern coast, where the Turia River meets the Mediterranean Sea. It's known for its City of Arts and Sciences, with futuristic structures including a planetarium, an oceanarium and an interactive museum. Valencia also has several beaches, including some within nearby Albufera Park, a wetlands reserve with a lake and walking trails.

Serving the west med itineraries, Valencia Cruise Port is a major port of Spain. With two berths available on the Poniente Quay, Valencia Cruise Port can berth the largest cruise ships in the world. The terminal offers a wide variety of services, including but not only a GIC, Duty Free Shop, F&B area, and several others.

Valencia Cruise Port is located on the Poniente Quay and has two berthing faces (395m and 379m long respectively) next to the Passenger Terminal. Access to the Terminal from the vessels is via an elevated walkway built along these quays, which is linked to the vessels by means a modern mobile finger system that can be adjusted to link up with any type of vessel. The port complies with all the requirements and specifications of the ISPS Code (International Ship and Port Facility Security Code) for international maritime goods and passenger traffic.

GPH, with its partner Baleària Group, has been awarded a 35-year concession agreement for the ferry and cruise port of Valencia, in November 2020.

VIGO SPAIN

Discover the Delights of Galicia

Vigo, dubbed "Gateway to the Atlantic," sits on the west coast of Spain's province of Galicia. Those on a Vigo cruise will marvel at its alluring terrain featuring a rugged coastline and picturesque harbor that seems to look more like a vast fjord than a Mediterranean harbor.

Vigo Cruise Port serves as the main gateway to this historic town. Featuring a 702m berthing line, the port can easily handle the largest ships in the world. It can simultaneously host 3 to 4 small ships or 2 large ships. With its terminal the cruise port can easily handle homeporting or interporting operations.

An authentic Galician old town, Vigo features ancient Roman ruins, neoclassical churches, nature-rich islands and estuaries. This city is an excellent base from which to visit the towns and villages along the Vigo estuary and the Cíes Islands that form part of the National Park of the Atlantic Islands. The cuisine of the Galician coast, based on fish and seafood, is an added incentive for visiting this region.

Vigo Cruise Port joined GPH network of ports in April 2020.



Maximum Ship Limitation for Berthing

Length : 365 m
Width : 65.7 m
Draught: 10 m



Quays / Berths

Total Number of Berths : 2
Total Berthing Line Length: 870 m
Quays Depth : 12 m
Terminal : Under Development



Distances/Transportation

City Center: 3 km
Airport : 25 km



Maximum Ship Limitation for Berthing

Length : 700 m
Width : No Limit
Draught: 12 m



Quays / Berths

Total Number of Berths : 2
Total Berthing Line Length: 1,000 m
Quays Depth : 9 m - 12 m
Terminal : 2



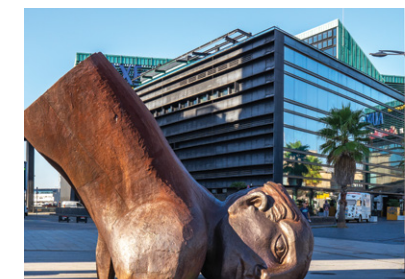
Distances/Transportation

City Center : 50 m
Airport : 15 km



Must See

City of Arts and Sciences
Plaza de la Reina
Bioparc Valencia
La Llotja de la Seda
Valencia Cathedral



Must See

Playa Samil
Parque Monte del Castro
Casco Vello
Castro's Fortress
Pazo Quinones de Leon
Santiago Compostela
Cíes Islands National Park



NORTH EUROPE

Northern Europe boasts a captivating blend of natural wonders, cultural richness, and historical treasures awaiting travelers' exploration. Renowned for its picturesque landscapes and immersive cultural experiences, the region offers a unique allure to cruise passengers.

Global Ports Holding made its debut in the region with Kalundborg Cruise Port in Denmark, marking the beginning of its Northern European journey. GPH is gearing up for the launch of operations at Bremerhaven Cruise Port in Germany in 2025. GPH is actively seeking opportunities to deepen its presence in Northern Europe.

NORTH ATLANTIC OCEAN

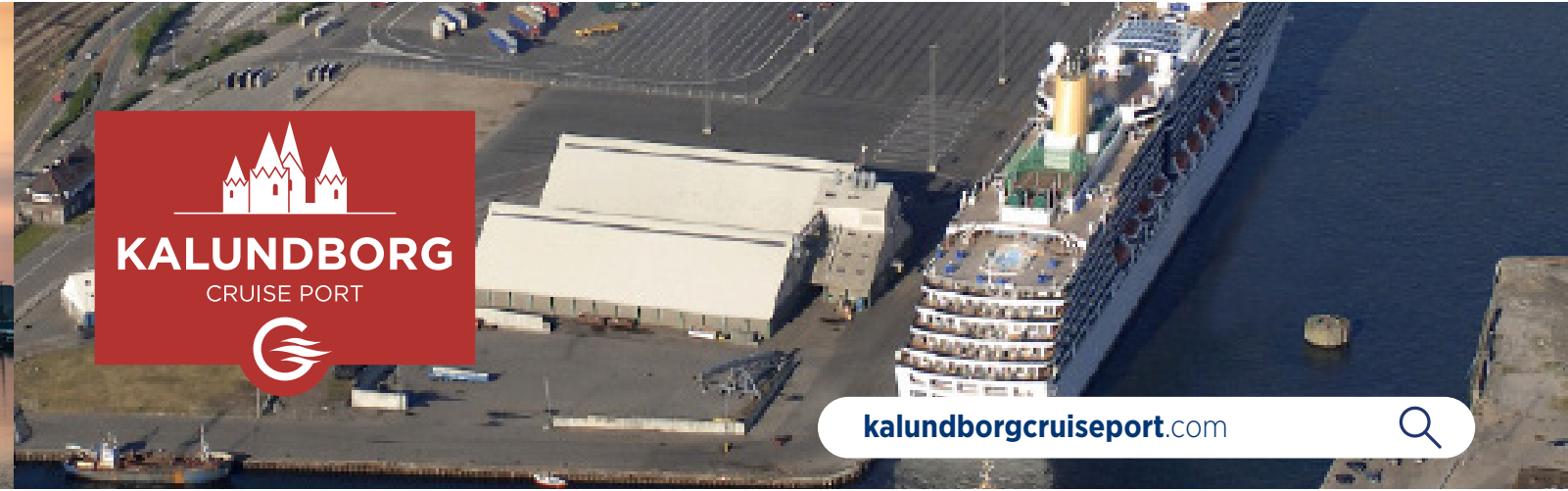
NORTH SEA

MEDITERRANEAN SEA

KALUNDBORG
DENMARK

BREMERHAVEN
GERMANY





BREMERHAVEN

GERMANY

The Maritime Gem of the North Sea

NEW PROJECT

Bremerhaven Cruise Port, operated by Global Ports Holding, has been awarded a 10-year port concession agreement, extendable by an additional 5 years, for the operation of the Cruise Terminal Columbusbahnh of Bremerhaven. This agreement marks a significant milestone for Bremerhaven Cruise Port, scheduled to commence in January 2025.

Bremerhaven's strategic positioning renders it ideal for traversing Scandinavian and Baltic Sea routes, making it a pivotal stop for cruise itineraries. Currently undergoing substantial investment by local authorities, the cruise facilities at Bremerhaven Cruise Port are slated for a comprehensive overhaul, promising enhanced amenities and services.

In 2022, the port welcomed over 230,000 passengers, predominantly originating from homeports, highlighting its established presence in the cruise industry.

Bremerhaven serves as a gateway to the majestic vistas of the North Sea, nestled at the northwest frontier of Germany. Positioned strategically, it thrives as a maritime and exploratory nucleus and as a pivotal juncture to the Atlantic. For enthusiasts of maritime lore, Bremerhaven beckons with museums and historic edifices that chronicle its seafaring legacy. Additionally, the port serves as the gateway to the world-famous city of Bremen, renowned for its cultural heritage and historical significance.

KALUNDBORG

DENMARK

Your New Turnaround Port in Denmark

Kalundborg is one of the few deep water cruise destinations located on Zealand at the Great Belt and close to the entrance to the Baltic from the North Sea. Hosting both transit and turnaround calls, Kalundborg Cruise Port serves cruise passengers as an alternative to Copenhagen.

Offering top class facilities for cruise ships, Kalundborg Cruise Port has a large quay area for cruise ships to operate their shore excursions and tours smoothly. With a complementary shuttle service from the harbor, the passengers can also enjoy a quick 15-minute ride to the town center. Only 100km away from Copenhagen, the cruise port offers a wide-range of attractions.

With a dedicated 500m cruise quay, Kalundborg Cruise Port can host the largest cruise ships in the world without size restrictions. The new terminal

building project which will serve both transit and turnaround operations will be ready in 2025. The project features both retail and luggage handling facilities, all the while representing the sustainable destination of Kalundborg.

Tracing the footsteps of Crusaders & Vikings, Kalundborg is one of the best-preserved medieval towns in Denmark and will provide you with experiences of authenticity, hospitality, and sincere warmth. With beautiful landscapes, small villages and sights, Kalundborg offers variety of must-see attractions to its visitors.

Global Ports Holding has signed a 20-year agreement to provide services for cruise passengers within Port of Kalundborg in October 2021, marking an important milestone as it is GHP's first port in the Northern European cruise market.



Maximum Ship Limitation for Berthing

Length : Unlimited
Width : Unlimited
Draught: 9.80 m



Quays / Berths

Total Number of Berths : 3
Total Berthing Line Length: 1,000 m
Quays Depth : 9 m - 11 m
Terminal : 1



Distances/Transportation

City Center : 3 km
Airport : 70 km



Maximum Ship Limitation for Berthing

Length : 340 m
Width : No Restrictions
Draught: 9 m



Quays / Berths

Total Number of Berths : 2
Total Berthing Line Length: 830 m
Quays Depth : 10 m - 15 m



Distances/Transportation

City Center : 5 km
Airport : 15 km
Shuttle Service: Yes



Must See

- Bremen
- Klimahaus Bremerhaven
- The German Maritime Museum
- Zoo by the Sea
- North Sea Aquarium
- German Emigration Center



Must See

- Dragsholm Castle
- Roesnaes
- Kalundborg Medieval Town
- Kragerup Estate
- Lerchenborg Castle
- Trelleborg Viking Fortress



CENTRAL MED

The Central Med region connects some of the most unique and iconic destinations. Strategically positioned in the center of the Mediterranean, the ports offer endless possibilities for just about any itinerary in the Eastern or Western Mediterranean.

Spearheading transformative endeavors that redefine port operations, GPH ports in Central Med, located in Italy, Malta, and Tunisia focus on reshaping cruise experience. The introduction of shore power in Valletta stands as a remarkable achievement, through collaborative efforts, showcases the commitment to environmental sustainability.

Simultaneously, Global Ports Holding's investments in shoreside retail areas across Italian ports and La Goulette are reshaping the passenger experience, serving as platforms to showcase and celebrate local products and culture. These multifaceted initiatives underscore Global Ports Holding's dedication to innovation and enhancing both environmental standards and visitor engagement throughout the Central Med region.





CAGLIARI ITALY

A Destination For All Seasons

Located in the West Med halfway between the Iberian coasts to the west, Italian coast to the east, and North African coast to the South, the port of Cagliari has the advantage of being included on different routes while offering unforgettable experiences to cruise passengers and fuel efficiency to cruise lines. Its interesting geographical location and its proximity to Cagliari-Elmas International Airport further strengthens Cagliari's position as a homeport.

Both a transit and turnaround port, Cagliari Cruise Port is conveniently located near the town center, along the waterfront, and can safely accommodate even the latest generation of large cruise ships in the three berths in the Rinascita pier exclusively reserved for cruises.

Cagliari Cruise Port provides a complete range of terminal, maritime and auxiliary services, and its modern structure is equipped with a free wi-fi, a

Guest Information Center that provides the best availability and hospitality for passengers and crew members, and a shopping area where you can find traditional handcrafts and local wine and foods.

Lying on seven hills near the gulf with the same name, Cagliari amazes everyone with its calm and sunny beauty. Capital of the Italian island of Sardinia, home of the oldest civilization in the Mediterranean and known for the beauty of its sea and its natural richness, the city is close to several sites of historical, naturalistic and archaeological interest, such as the UNESCO world heritage site "Su Nuraxi of Barumini".

The warm climate and the few rainy days allow to the island's capital to be a tourist destination four seasons a year: every day is the perfect time to leave for Cagliari and discover the hidden treasures of Sardinia.



Maximum Ship Limitation for Berthing

Length : 400 m
Width : No Limit
Draught: 9.5 m



Quays / Berths

Total Number of Berths : 3
Total Berthing Line Length: 1,040 m
Quays Depth : 8 m - 11 m
Terminal : 1



Distances/Transportation

City Center : 800 m
Airport : 6 km
Shuttle Service: Free shuttle bus to the port gate



Must See

- Castello & Marina districts
- Poetto Beach
- Shrine of Our Lady of Bonaria
- Conti Vecchi salt flats
- Molentargius park
- Nora, archeological site
- Su Nuraxi of Barumini - Unesco site
- Barrali - traditional food & wine experience



CATANIA ITALY

The Land of Cruisers

At the foot of the immense Mount Etna, the highest active volcano in Europe, and washed by the blue Ionian Sea, here is Catania: a magnetic Italian city. It is renowned for its baroque streets in the historic center, UNESCO World Heritage site since 2002, loved for its heterogeneous landscape, its cultural liveliness, its incredible history and unforgettable culinary tradition. Catania is Sicily's second-biggest city, located in a strategic position that encourages visits to many close historical sites and well-known seaside cities, such as the romantic Taormina and the beautiful Syracuse.

Catania Cruise Port manages the local cruise terminal, offering transit and turnaround operations, and can safely accommodate even the latest generation of large cruise ships in the three berths of the Sporgente Centrale pier, exclusively reserved for cruises. Conveniently located near the town center, along the waterfront, Catania Cruise Port offers cruise ships

and passengers the typical warm welcome of southern Italy, together with excellent and always welcoming terminal, maritime and auxiliary services.

The construction of a new eco-sustainable cruise terminal is expected shortly, with large spaces dedicated to crew and passengers' services and a modern retail area enriched by the colors, shapes and scents of food and wine products and typical local crafts. The structure will flank the existing one to guarantee passengers and Cruise Lines maximum comfort and the safest operational continuity.

The mild weather and the little rainfall make Catania an ideal destination for tourism throughout the year, and the presence of a strong territorial tourist armor, made up of a lively and modern network of transport, accommodation facilities and available activities, make it perfect for pre and post cruise packages.



Maximum Ship Limitation for Berthing

Length : 340 m
Width : No Limit
Draught: 9.5 m



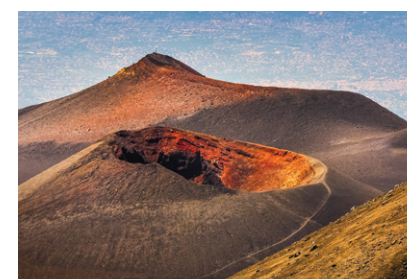
Quays / Berths

Total Number of Berths : 4
Total Berthing Line Length: 818 m
Quays Depth : 10 m - 13 m
Terminal : 1



Distances/Transportation

City Center: 700 m
Airport : 5.3 km



Must See

- Mount Etna
- S. Agata Cathedral
- Greek-Roman Theatre and Odeon
- Monastery of Benedettini
- Museum of Ursino Castle
- Taormina
- Syracuse



CROTONE

ITALY

In the Footsteps of Pythagoras

Crotone is located in one of the most fascinating territories of Calabria, in the southern tip of the Italian boot. Enclosed between the clear waters of the Ionian Sea and the green woods of its parks, the city boasts many naturalistic, historical and cultural riches, enjoyable all year round thanks to the mild Mediterranean climate that gives it temperate winters, hot summers and rainfall mainly concentrated in autumn.

Crotone Cruise Port manages the cruise terminal of Crotone offering transit, inter-porting and homeport operations, as well as an increasingly wide range of ancillary services.

Dedicated to small and medium sized ships, it is a hidden pearl in the heart of the Mediterranean Sea. Strategically equidistant from the ports

of Taranto, Catania and Corfu, Crotone fits perfectly into the East-Med itineraries.

Crotone has always been known for its strong bond with Pythagoras. Right here, where the Greek colonists founded the new polis in the seventh century BC, the philosopher decided to move from Greece to create his own school.

Thanks to a mild climate, a rich hospitality system and a modern and efficient infrastructural network, the Ionian Calabria finally shows its beauties also to the cruise public, a new emerging star in the panorama of the ports of the Mediterranean Sea.

Maximum Ship Limitation for Berthing

Length : 280 m
Width : No Limit
Draught: 7.5 m

Quays / Berths

Total Number of Berths : 1
Total Berthing Line Length: 330 m
Terminal : 1

Distances/Transportation

City Center: 250 m
Airport : 15 km



- Must See**
- Civic Museum of Crotone
 - Cathedral of Santa Maria Assunta
 - National Archaeological Museum of Crotone
 - Castle of Carlo V and Villa Comunale Park
 - Capo Colonna Archaeological Park
 - Municipality Of Santa Severina
 - Sila National Park
 - Isola di Capo Rizzuto



LA GOULETTE

TUNISIA

Roaming Through a Fantasy

La Goulette is a town located in northern Tunisia and a gateway to the capital which lies at the western end of Lake Tunis. A popular summer resort since the 19th century, La Goulette takes its place in the West Med itineraries, offering a non-EU destination option to the cruise lines.

La Goulette Cruise Port features berths with a total of 657mtr which enable the port to receive the mega ships such as Oasis, Excellence and Meraglivia-plus class cruise ships. The ISPS compliant port, offers services to cruise passengers with enhanced security operations. With two terminal buildings, La Goulette Cruise Port can easily handle the operations of the cruise ships.

Covering an area of 6,500sq mtr, the Goulette Village Harbour resembles a medina with Tunisian architectural styling and comprises a central building

with two wings alongside housing 35 shops selling local traditional clothing, watches and jewellery. There is an a la carte fish restaurant, some cafes and juice bar along with a hammam and health & beauty shops.

La Goulette is located in a coastal area that includes the ruins of ancient Carthage and the picturesque suburb of Sidi Bou Said, places that attract more visitors than Tunis itself. As far as capital cities go, Tunis has an easy-going, unhurried air about it. Home to several UNESCO Heritage sites, the city is a masterpiece of historical and cultural art. With an area known as "La Petite Sicile" that was home to a sizeable Jewish, Italian, and Maltese community, the town has several remains of Hispano-Turkish fortifications and other cultural heritages, the city welcomes the tourists with a warm breeze.

Maximum Ship Limitation for Berthing

Length: 340 m
Width : No Limit
Draugh: 8.4 km

Quays / Berths

Total Number of Berths : 3
Total Berthing Line Length: 657 m
Quays Depth : 5.1 m - 10 m
Terminal : 2

Distances/Transportation

City Center: 12.2 km
Airport : 17 km



- Must See**
- La Medina
 - Sidi Bou Said
 - Bardo Museum
 - The Sahara
 - Carthage



tarantocruiseport.com



vallettacruiseport.com

TARANTO

ITALY

A Destination Beyond Your Imagination

Located in the deep blue Ionian coast of Southern Italy, Taranto is the gateway to Apulia's whitewashed hill towns and white-sand beaches. Thanks to its geographical position, Taranto is perfect to be included in itineraries in the central-eastern Mediterranean Sea, giving passengers an experience beyond all imagination.

Taranto Cruise Port manages the modern and well equipped cruise terminal of S. Cataldo pier, located a few steps from the ancient heart of the city, able to accommodate large flows of passengers and to offer new functional terminal, maritime and auxiliary services, while its two berths can safely accommodate even the new large cruise ships for transit and turnaround operations.

From architectural icons to converted warehouses, from contemporary street art to ancient archaeological finds, from the vast port system to the blue oasis for dolphins and whales, Taranto captivates with its vitality, its thousand faces and its fervent dynamism, whose instinct to innovation goes hand in hand with the intent to protect and enhance the legacy of its majestic past. Immersed in the magical Apulian Salento, Taranto is the magnificent gateway to Matera and Alberobello, UNESCO sites of considerable value, and to the many very close beautiful beaches.

VALLETTA

MALTA

The Door to the Mediterranean

Valletta Cruise Port, Malta is strategically positioned in the centre of the Mediterranean, offering endless possibilities for any Mediterranean itinerary through its appealing combination of location, practicality, and versatility. Being the only licensed cruise and ferry terminal operator in Valletta, the port welcomes over 900,000 passengers annually into a city considered to be an open-air museum and a portal to the islands' historical and cultural experiences.

The award-winning Valletta Cruise Port is situated in a natural deep-water harbour, providing year-round easy access to ships of all sizes. The port can accommodate multiple cruise ships simultaneously and has three passenger facilities, with the main terminal located in the historic Magazzino Hall, which is fully modernized. A fiber optic connection from Magazzino Hall to the ship allows for simultaneous onboard registration and check-in. The facilities are easily capable of processing at least 1,000 guests per hour. The small size

of the island means all attractions are within close proximity of one another. Furthermore, Valletta Cruise Port is just 10 minutes away from Malta International Airport, making it ideal for turnaround operations.

The port is the gateway to Malta's 7,000 years of recorded history, making it a favourite destination with travellers seeking an authentic island experience. Passengers can step off the ship immediately onto the Valletta Waterfront, one of Malta's most iconic landmarks. There are 19 beautifully restored 18th century warehouses built during the late Baroque period, surrounded by majestic golden bastions. These magnificent gemstone buildings were originally constructed by Grand Master Pinto to be used as stores by the Knights of St. John, today restored to offer a host of diverse services.

A €49.9 million shore-side electricity project, supported by Valletta Cruise Port, is steadily in progress and has been rolled out.



Maximum Ship Limitation for Berthing

Length : 360 m
Width : No Limit
Draught: 9 m



Quays / Berths

Total Number of Berths : 3
Total Berthing Line Length: 865 m
Quays Depth : 10 m
Terminal : 1



Distances/Transportation

City Center: 2,5 km
Airport : 20 Km



Maximum Ship Limitation for Berthing

Length : 360 m
Width : No Limit
Draught: 12 m



Quays / Berths

Total Number of Berths : 7
Total Berthing Line Length: 2,117 m
Quays Depth : >12 m
Terminal : 3



Distances/Transportation

City Center : 1.5 km
Airport : 6 km
Shuttle Service: Yes



Must See

National Archaeological Museum of Taranto (MARTA)
Spartan Hypogeum Museum
Castello Aragonese
Itria Valley
Alberobello (UNESCO site)
Matera (UNESCO site)
Grottaglie
Martina Franca



Must See

Valletta Waterfront
Grandmaster's Palace, Valletta
St John's Co Cathedral, Valletta
Mdina (Malta's old capital city)
Neolithic Temples



VENICE ITALY

The Best Facilities Lead to Venice

Venezia Terminal Passeggeri S.p.A. (V.T.P.) operates one of the largest homeports of the world and the main gateway for cruising in the Adriatic and Eastern Med.

Conveniently located at the crossroad of the main road, rail and air network, within a short walking, sailing and driving distance from Venice city center, it attracts every year over 40 cruise brands.

Know how, flexibility, non-stop improvement of operating efficiency, steady innovation in safety and security, these are the key skills the cruise operators can count on when calling in Venice. 10 multifunctional terminals, 6 dedicated quays across Marittima, Santa Marta and San Basilio areas, wide spaces for motor coaches and taxis as well as for provisions storage, the main facilities at disposal of cruise ships.

Shops, duty free, left luggage facilities, refreshment areas are among the main amenities passengers, whether homeport or in transit, can enjoy. Drive-in cruisers can opt for convenient on port parking (2.300 places available), few meters away from the embarking point, while for those arriving from or heading to the city center the following on-site and nearby services are made available to ensure a hassle-free ashore experience: water and land taxi booking center, limousine hire, internal shuttle bus and people mover.

Aside from cruises, other leisure maritime vessels enjoy V.T.P. facilities: river cruise ships, yearly deployed on the route Venice lagoon-Po River, hydrofoils with seasonal connections to/from Istrian Peninsula and mega yachts.



Maximum Ship Limitation for Berthing

Length : 340 m
Width : No Limit
Draught : 9.1 m



Quays / Berths

Total Number of Berths : 7
Total Berthing Line Length: 3,400 m
Quays Depth : 10 m
Terminal : 1



Distances/Transportation

City Center: 500 m
Airport : 13 km



Must See

St Marco Square and the Basilica of St Marco
The Doge's Palace
Gallerie dell'Accademia Art Collection
Guggenheim Peggy Collection
Palazzo Grassi
Rialto Bridge



Mount Etna, located on the east coast of Sicily in Catania, Italy, is one of the world's most active and iconic volcanoes. Its towering presence and unique geological features make it a popular destination for visitors and scientists alike. With its frequent eruptions and diverse landscapes, including fertile slopes and rugged lava fields, Mount Etna is a captivating natural wonder that offers both stunning vistas and an opportunity to study Earth's dynamic forces.



EAST MED

The East Med region holds an esteemed position in the cruise industry, acclaimed for its enchanting and historically significant destinations.

Remarkable strides in infrastructure enhancement and pioneering health, safety, and security protocols are being championed by the GPH Ports within this region. Notably, Kusadasi and Bodrum are at the forefront of eco-friendly investments, while the heightened activity in Bar and Zadar reflects the escalating popularity of these locales. GPH's resolute dedication to elevating passenger experiences and rejuvenating destinations underscores their commitment to continual transformation.





BAR

MONTENEGRO

Your New Port in Montenegro

Bar Cruise Port is located at Port of Adria, Montenegro's main seaport with separate harbors for container ships, general cargo vessels and cruise ships, and a pier length of 1,440 meters. Strategically located on the Adriatic near major cruise destinations such as Dubrovnik and Kotor, the Bar Cruise Port stands out as a new destination for cruises.

With two quays at 290 and 200 meters in length, Bar Cruise Port can accommodate cruise ships over 300 meters. Planned construction of a cruise terminal building is set to elevate the appeal of the port for cruise passengers.

The port welcomed its first cruise call on May 2016, making its entry into the Adriatic cruise market. Welcoming 16 cruise ships with over 25,000 passengers in 2018, Bar Cruise Port is doubling its cruise traffic every year.

This significant increase shows the port's ability to welcome new lines and accommodate new goals that motivate the stakeholders to go forward together.

Bar, located between two shores of the Adriatic Sea and of Lake Skadar, offers compelling features for Adriatic cruise itineraries. The surrounding area also holds major tourism appeal. In the meeting point of combination of sea and lake colors and scents, fresh and salt water, forests and olive groves each visitor will find something special to suit oneself. Modern Bar was built almost entirely after World War II in a contemporary architectural style featuring wide boulevards. Bar offers varied shore excursions, and is close to main tourist attractions. In addition to these features, as well as its pleasant climate, the Bar Cruise Port is one of the few non-EU ports in the Adriatic region.



Maximum Ship Limitation for Berthing

Length : 330 m
Width : No Limit
Draught: Max 12 m



Quays / Berths

Total Number of Berths : 2 (for cruise)
Total Berthing Line Length: 490 m
Quays Depth : 10.5 m - 12 m



Distances/Transportation

City Center : 1 km
Airport : 45 km
Shuttle Service : Yes



BODRUM

TÜRKİYE

Discover a Destination of Pure Luxury

Situated on a peninsula surrounded by the Aegean Sea, Bodrum is one of the most attractive coastal cities in Türkiye. Bodrum Cruise Port is located a brief stroll from the city center, and 36 km from Milas International Airport.

Bodrum Cruise Port features a finger pier, which can accommodate two large-sized, or four smaller cruise ships at a time. The world's largest cruise ships, can berth easily thanks to its pier extension in 2011. Apart from the cruise pier, the port boasts quays that can harbor up to 30 mega-yachts, and has three ferryboat ramps.

Bodrum Cruise Port provides full terminal services, marine services and auxiliary services. The state-of-the-art terminal building offers diverse

facilities including duty free shopping areas, travel agencies and a restaurant. Bodrum Cruise Port is ISPS compliant and holds ISO 9001-14001-18001 certificates. In late 2015, the port received Green Port accreditation upon approval of the Maritime Transport and Communications Ministry General Directorate of the Merchant Marine and Turkish Standards Institution.

Known for its famous nightlife, beaches, natural beauty, and ancient history, Bodrum is the trending destination for cruise. Build on the site of the ancient city of Halicarnassus, Bodrum possess one of the Seven Wonders of the Ancient World, The Mausoleum, and recently listed UNESCO Heritage site, St Peter's Castle and Museum of Underwater Archeology.



Maximum Ship Limitation for Berthing

Length : 340 m
Width : No Restriction
Draught: 9 m



Quays / Berths

Total Number of Berths : 4
Total Berthing Line Length: 680 m
Quays Depth : 8 m - 22 m
Terminal : 1



Distances/Transportation

City Center : 1.5 km
Airport : 35 km



Must See

- Bar Old town – Stari Bar
- Old Olive Tree
- King Nikola's Palace
- St Nicholas's Church
- Aqueduct
- Skadar Lake
- Wine routs of Montenegro



Must See

- St. Peter's Castle
- Myndos Gate
- The Bodrum Museum of Underwater Archaeology
- The Antique Theatre
- Blue Voyage on a Gullet
- Euromos & lasos



KUŞADASI TÜRKİYE

The Gateway to Ephesus

Situated on the west coast of Türkiye, the dynamic cruise port and beach resort town of Kuşadası is the gateway to Ephesus, which is among the most visited ancient cities in the Mediterranean. Ege Port, Kuşadası operates the Port of Kuşadası which is located 50 meters to the city center.

Ege Port extended its two piers in 2011 and has a total pier length of 1,297m, meaning it can welcome Oasis class ships. With its two finger piers, the port can berth up to four large vessels, or four smaller and two large vessels. It features two roll-on/roll-off ramps and a quay to service ferry traffic. Ege Port provides full terminal services, marine services and auxiliary services. The modern passenger terminal with duty free shopping areas, a first-aid care facility and a passenger and crew center equipped with internet and

other communication facilities provides utmost suitability and comfort for passengers and crew members. Besides, the completely renovated Scala Nuova Village located directly across from the Arrival Terminal, in a cozy array of an Aegean village like streets, offers exotic, colorful shops, chic cafés, bars and restaurants tailored exclusively for our cruise ship clientele.

Thanks to extensive investments, Ege Port has become the busiest cruise port in Türkiye and is a major port of call in the East Mediterranean. Ege Port was the first port in Türkiye to be ISPS compliant, receiving its ISPS certification in 2004. The ISO 9001-14001-18001 certificated port proudly holds a "Green Port" accreditation since 2015 as well.

ZADAR CROATIA

The Gateway to Croatian Treasures

Situated in the center of the Croatian Adriatic coast, Zadar is vibrant historical town with Roman ruins, medieval churches, and fortifications, all intertwined with an array of charming cafes, wine bars, and Mediterranean gastronomic experiences.

Zadar Cruise Port was opened in April of 2019. It is Croatia's most awarded cruise port and the biggest cruise terminal in the area. With proximity to the airport and a modern highway network, Zadar Cruise Port is an ideal Croatian port for transit and turnaround operations for ships of all sizes.

The cruise port infrastructure includes impressive two-floor terminal building of 18 000m³, five international berths with maximum draft of 13m and 1150m of total pier length. It can easily accommodate 14,000

passengers and the largest ships in the world.

The cruise port and the passenger terminal offer an array of services for the comfort of all visitors, passengers and crew. Zadar Cruise Port has been continuously recognized for service excellence, enhanced security, safety and health protocols, and as such it is setting new standards in port management in Croatia.

Zadar is an intriguing city that captivates visitors with its diversity of ancient heritage, Venetian elegance, and coastal setting. It is gateway with direct access to some of the best-known Croatian sites including numerous historical, natural and cultural attractions. Exploring breathtaking sites in its surrounding areas is a must, because whether it is relaxation or adrenaline rush that you are seeking, you will certainly find it here.



Maximum Ship Limitation for Berthing

Length : 370 m
Width : No Restrictions
Draught: 10 m



Quays / Berths

Total Number of Berths : 8
Total Berthing Line Length: 1,297 m
Quays Depth : 9 m - 19 m
Terminal : 1



Distances/Transportation

City Center: 50 m
Airport : 64 km



Maximum Ship Limitation for Berthing

Length : No Restrictions
Width : No Restrictions
Draught: 7 m - 12 m



Quays / Berths

Total Number of Berths : 5
Total Berthing Line Length: 1,150 m
Quays Depth : 7 m - 13 m
Terminal : 1



Distances/Transportation

City Center: 4 km
Airport : 7 km



Must See

Ephesus
The Temple of Artemis
The House of Virgin Mary
The Basilica of St. John
Sirince Village
Selcuk Museum



Must See

The Greeting to the Sun solar monument
The Sea Organ architectural wonder
UNESCO Site Fortification city walls
Zadar Cathedral
Church of St Donatus
People's Square
National Parks: Krka Waterfalls, Plitvice Lakes, Paklenica
The Kornati Archipelago



**GLOBAL PORTS
HOLDING**

ASIA

The Asia region has emerged as a dynamic and rapidly growing sector within the global cruise industry, reshaping travel trends and contributing to the industry's evolution. This expansive region, characterized by its diversity of cultures, landscapes, and experiences, has become a focal point for cruise enthusiasts seeking new and enriching adventures.

Leading cruise hubs in Asia, such as Singapore, Shanghai, and Hong Kong, have transformed into pivotal embarkation points, connecting travelers with diverse destinations across the continent. GPH's ports in this region, particularly Singapore, offer world-class infrastructure and passenger amenities, significantly enhancing the embarkation and disembarkation experiences for cruise travelers. Moreover, Ha Long in Vietnam, recognized as a UNESCO World Heritage Site, strategically sits at the crossroads of international maritime and air routes.

HA LONG
VIETNAM

SINGAPORE
SINGAPORE



HA LONG VIETNAM

A World Heritage Site's Cruise Port

Located on the crossroads of international maritime and air routes, with roads and railways across Asia, Vietnam serves as the gateway to the sea of Laos, Northeastern Cambodia and Thailand, Southwest China. In the heart of Vietnam, Ha Long has increasingly developing infrastructure, road transport systems, highways, and airways making it convenient to travel to other destinations in Vietnam. In 2019, the number of tourists visiting Ha Long reached over 4 million

Ha Long Cruise Port has 6 piers, including 4 piers to accommodate yachts and cruise junks and 1 pier (including 2 quays) for mega cruise ships. As an

ideal destination for domestic and international tourists, Ha Long Cruise Port is a gateway to many experiences to discover the beauty of Vietnam. The services Ha Long Cruise Port provides includes berthing of international cruise ships, berthing of domestic cruise junks, domestic/ international terminal operations and entry/exit to visit Ha Long Bay.

Ha Long Bay was declared as one of the Seven New World Natural Wonders by New7Wonders in 2012. A beautiful combination of emerald waters and scattered islands, Ha Long Bay is a Unesco Heritage site.

SINGAPORE SINGAPORE

Your Singapore Homeport in Southeast Asia

Operated by SATS-Creuers Cruise Services, the purpose-built Marina Bay Cruise Centre Singapore (MBCCS) is located next to Marina South, Singapore's premier lifestyle and financial hub. With its prominent location on the waterfront and the backdrop of Singapore's skyline, MBCCS is a marine gateway to the heart of the city. Singapore's strategic location coupled with the state of the art facilities and proximity to the city and international airport position Singapore as the Asia's Cruise hub.

With deep waters, a large turning basin and no height restrictions, MBCCS is able to handle up to 6,800 passengers at any one time and to accommodate ships up to 220,000 GRT. The terminal is an architectural landmark in its own right, capable of accommodating some of the world's largest ships with its two piers that reach up to 360 m. Its capacity to accommodate two mega ships simultaneously makes it one of the largest cruise terminals

in Asia. The terminal features a spacious arrival and departure hall, with a sizable ground transportation area that affords passengers an effortless and seamless experience. The terminal is just a 20-minute drive from the ultra-modern Changi International Airport, which features a direct highway exit and is 3 km from midtown. With CruiseFly, the region's first air-sea transfer service, MBCCS bridges the gap between airport and cruise terminal.

The terminal was designed to complement a number of Singapore's other iconic projects, such as the Central Business District, Marina Bay Integrated Resort, Singapore Flyer, Esplanade, and Gardens by the Bay. Indeed, all of these serve to promote the image of Singapore as a destination of world-class attractions, infrastructure and leisure facilities. Singapore has been described as a thriving cosmopolitan city that's brimming with diversity, as well as a multiplicity of culture, language, arts and architecture.



Maximum Ship Limitation for Berthing

Length : 362 m
Width : 65.7 m
Draught: 9.3 m



Quays / Berths

Total Number of Berths : 2
Total Berthing Line Length: 924 m
Quays Depth : 10 m - 14 m
Terminal : 1



Distances/Transportation

City Center : 3 km
Airport : 45 km
Shuttle Service: Yes



Maximum Ship Limitation for Berthing

Length : 360 m
Width : N/A
Draught: 11.3 m



Quays / Berths

Total Number of Berths : 2
Total Berthing Line Length: 695 m
Quays Depth : 11.3 m - 11.5 m
Terminal : 1



Distances/Transportation

City Center: 3 km
Airport : 25 km



Must See

- Ha Long Bay
- Sun World Ha Long Complex
- Heavenly Residence Grotto
- Ha Noi Capital
- Trang An (Ninh Binh)



Must See

- Gardens by the Bay
- Singapore Flyer
- Botanical Gardens
- Chinatown
- Arab Street
- National Gallery
- Little India

Ha Long Bay, Vietnam



Nestled along the northeastern coast of Vietnam, Ha Long Bay beckons with its ethereal beauty and captivating landscapes. Renowned for its emerald waters dotted with towering limestone pillars, this UNESCO World Heritage Site offers a mesmerizing escape into nature's embrace. Embark on a cruise through the bay's tranquil waters, where every turn unveils breathtaking vistas and cultural wonders waiting to be discovered.

One World One Community



Proud to operate
the first port in the Med with
OPS capability

Our commitment to **sustainability** extends across all our ports, where we invest in green terminals and uphold the highest operational standards. Let's navigate towards a brighter future.

The World's Largest Cruise Port Operator



**GLOBAL PORTS
HOLDING**

globalportsholding.com 🔍



GLOBAL PORTS HOLDING

globalportsholding.com

Alicante - Antigua - Bar - Barcelona - Bodrum - Bremerhaven - Cagliari - Catania - Crotone - Fuerteventura - Ha Long
Kalundborg - Kusadasi - La Goulette - Lanzarote - Las Palmas - Lisbon - Malaga - Nassau - Prince Rupert
Saint Lucia - San Juan - Singapore - Taranto - Tarragona - Valencia - Valletta - Venice - Vigo - Zadar